



RETAIL & SALON SPACE FOR LEASE

7329-7339 Broadway, Kansas City, Missouri




Lease Rate: \$25/SF | 800 & 1,000 SF In-Line Spaces

DEMOGRAPHICS

	1 mile	3 miles	5 miles
Estimated Population	15,512	98,504	242,827
Avg. Household Income	\$121,733	\$128,045	\$101,222

- 5,000 SF Building on .33 acres
- 800 SF Fully Functioning Salon Space - immediate occupancy
- Rare on site parking in Waldo
- Recently renovated center

 [CLICK HERE TO VIEW MORE LISTING INFORMATION](#)

For More Information Contact:

MARSHAL BLOUNT | 816.412.7342 | mblount@blockandco.com

DAVID BLOCK | 816.412.7400 | dblock@blockandco.com

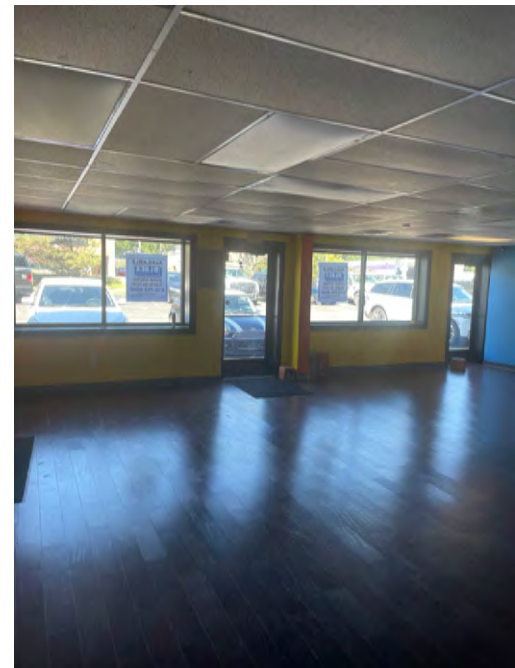
Exclusive Agents



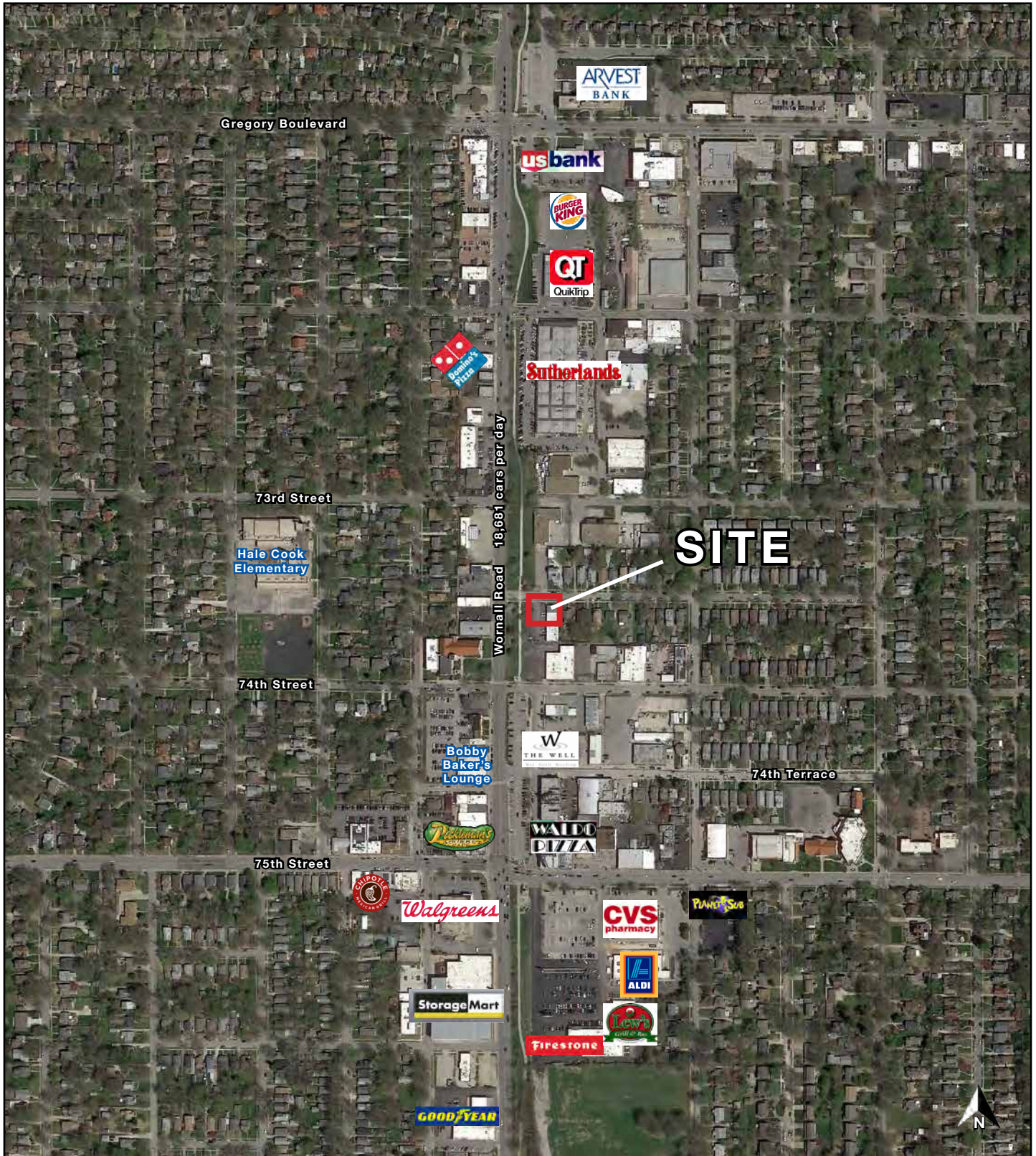
800 SF SALON SPACE (7331)



1,000 SF IN-LINE SPACE (7335)



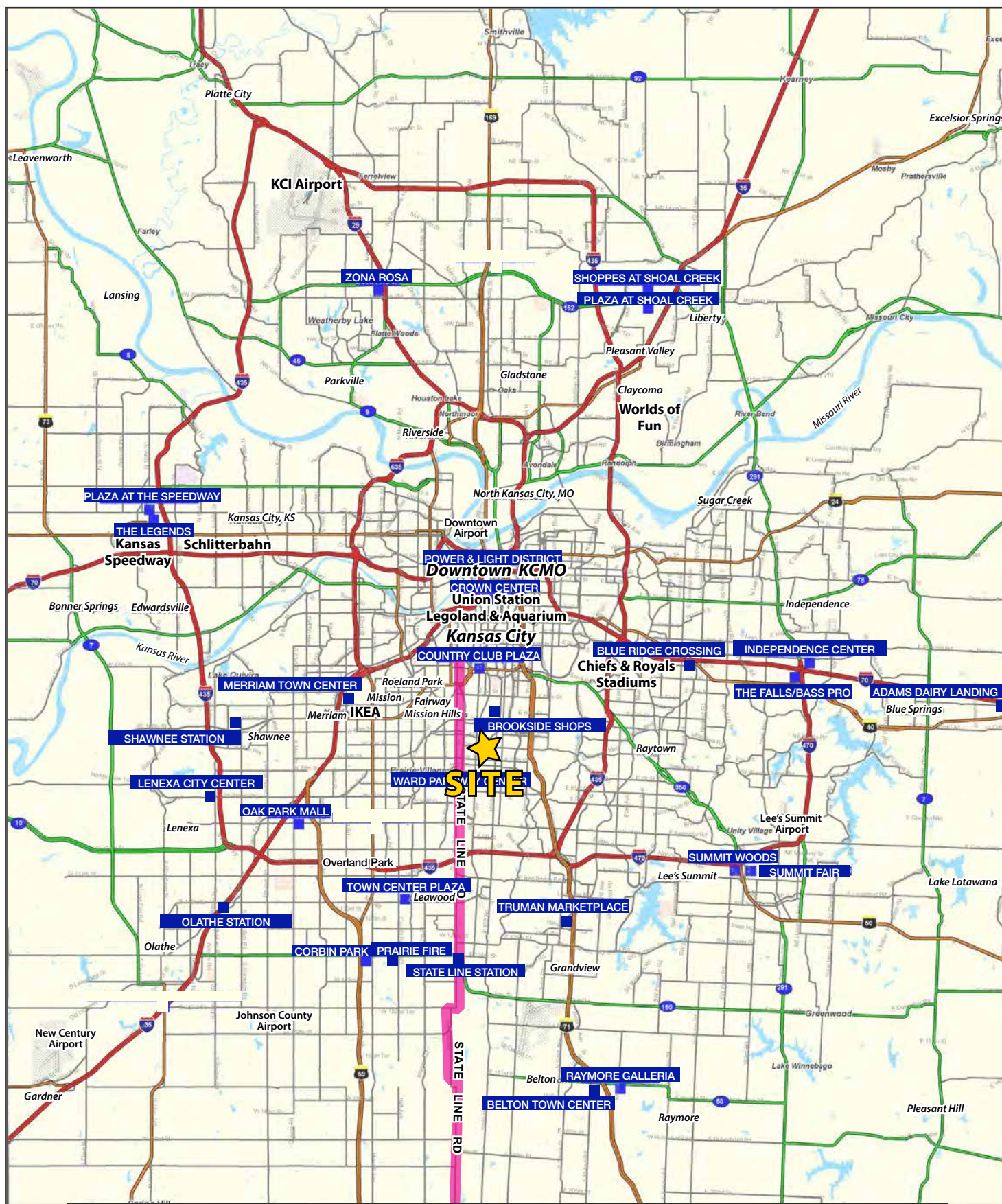
AERIAL





RETAIL & SALON SPACE FOR LEASE

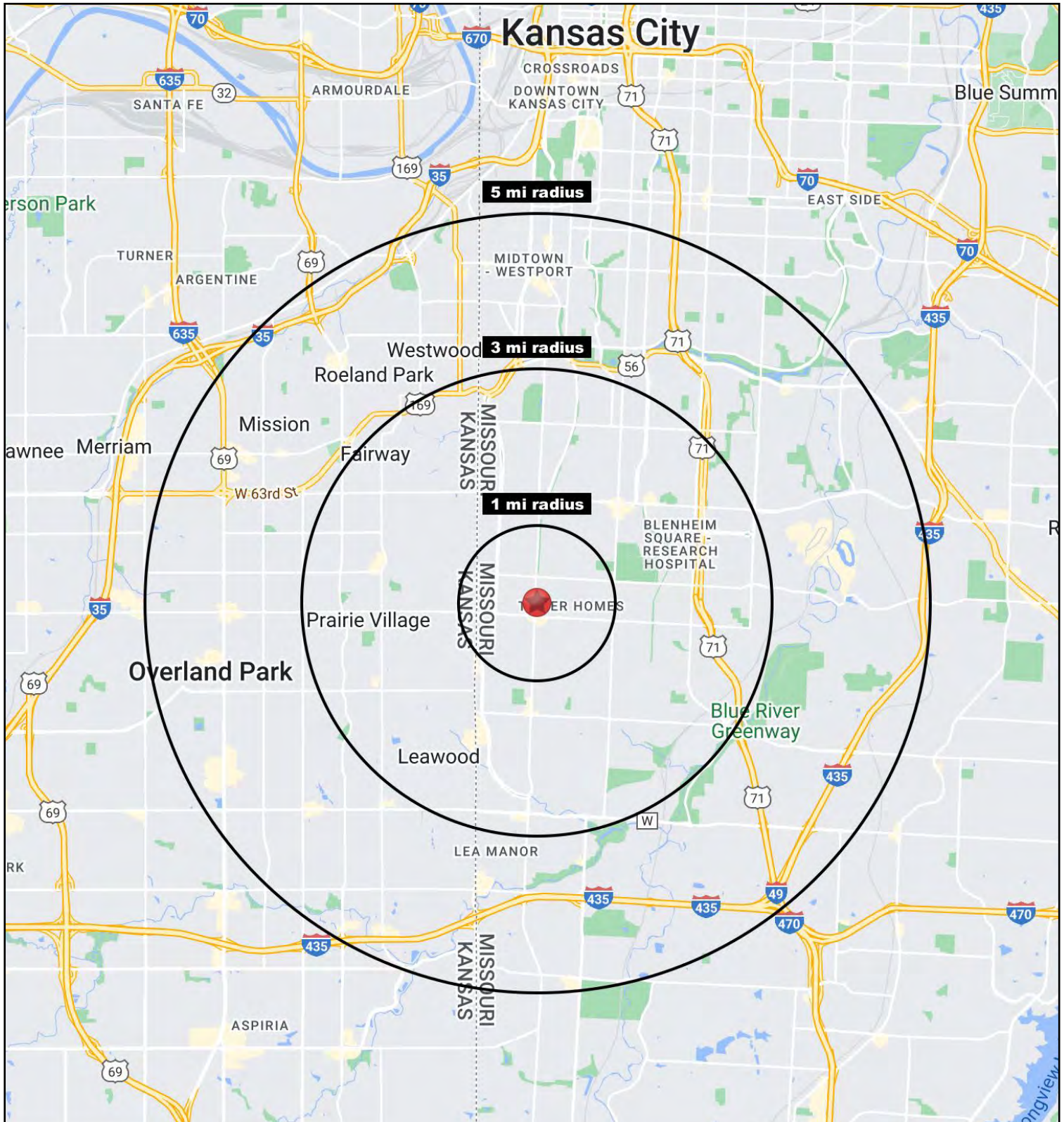
7329-7339 Broadway, Kansas City, Missouri





RETAIL & SALON SPACE FOR LEASE

7329-7339 Broadway, Kansas City, Missouri





RETAIL & SALON SPACE FOR LEASE

7329-7339 Broadway, Kansas City, Missouri

7329 Broadway Kansas City, MO 64114	1 mi radius	3 mi radius	5 mi radius
Population			
2021 Estimated Population	15,512	98,504	242,827
2026 Projected Population	15,407	98,089	244,438
2020 Census Population	15,720	98,447	241,861
2010 Census Population	15,297	95,616	233,491
Projected Annual Growth 2021 to 2026	-0.1%	-	0.1%
Historical Annual Growth 2010 to 2021	0.1%	0.3%	0.4%
2021 Median Age	38.1	39.4	39.2
Households			
2021 Estimated Households	7,538	43,284	113,180
2026 Projected Households	7,599	43,982	116,098
2020 Census Households	7,603	43,221	112,501
2010 Census Households	7,307	41,609	107,735
Projected Annual Growth 2021 to 2026	0.2%	0.3%	0.5%
Historical Annual Growth 2010 to 2021	0.3%	0.4%	0.5%
Race and Ethnicity			
2021 Estimated White	78.8%	61.9%	61.5%
2021 Estimated Black or African American	9.7%	25.4%	22.9%
2021 Estimated Asian or Pacific Islander	2.1%	3.9%	3.6%
2021 Estimated American Indian or Native Alaskan	0.3%	0.3%	0.4%
2021 Estimated Other Races	9.1%	8.4%	11.6%
2021 Estimated Hispanic	6.7%	5.5%	9.4%
Income			
2021 Estimated Average Household Income	\$121,733	\$128,045	\$101,222
2021 Estimated Median Household Income	\$92,579	\$90,159	\$76,269
2021 Estimated Per Capita Income	\$59,191	\$56,402	\$47,315
Education (Age 25+)			
2021 Estimated Elementary (Grade Level 0 to 8)	0.7%	1.1%	1.5%
2021 Estimated Some High School (Grade Level 9 to 11)	1.6%	4.1%	4.0%
2021 Estimated High School Graduate	12.1%	16.9%	18.5%
2021 Estimated Some College	15.4%	17.5%	18.6%
2021 Estimated Associates Degree Only	5.1%	5.3%	6.1%
2021 Estimated Bachelors Degree Only	38.5%	31.9%	30.7%
2021 Estimated Graduate Degree	26.6%	23.1%	20.5%
Business			
2021 Estimated Total Businesses	728	3,786	10,624
2021 Estimated Total Employees	6,152	46,595	151,925
2021 Estimated Employee Population per Business	8.4	12.3	14.3
2021 Estimated Residential Population per Business	21.3	26.0	22.9

©2022. Sites USA. Chandler, Arizona. 480-491-1112 Demographic Source: Applied Geographic Solutions 11/2021. TIGER Geographv - RS1

